



City Gardens, Spinners Way, Manchester

£1,350 PCM

Ascend Properties are delighted to introduce to market this modern two bedroom, two bathroom furnished apartment in City Gardens, stunning 11 story development in Castlefield, the heart of Manchester City Centre.

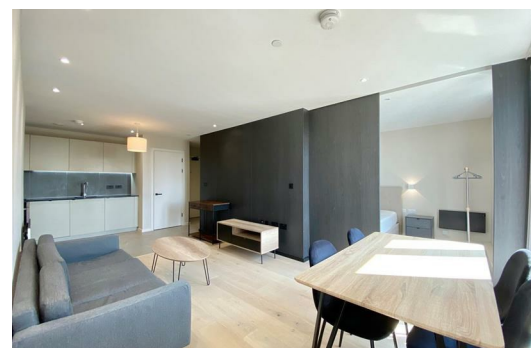
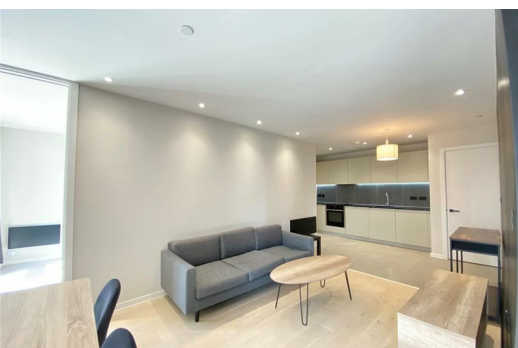
Castlefield is known for its vibrant, modern waterside living, complemented by appealing bars, restaurants, music and entertainment. Among the attractions are the celebrated Castlefield Bowl outdoor arena, the Castlefield Gallery and the popular Museum of Science and Industry.

This two-bedroom apartment features two double bedrooms with private en suite and sliding loft style doors, a stylish open plan kitchen and living area benefiting from the large sky garden balcony/terrace.

This development benefits from a Roof Garden with views across Manchester city centre, bike storage and private balconies.

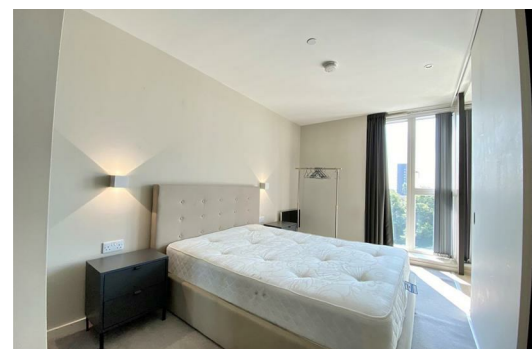
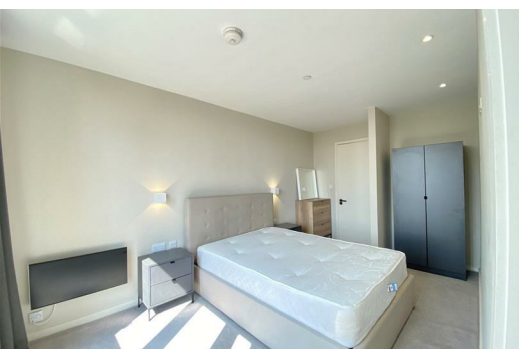
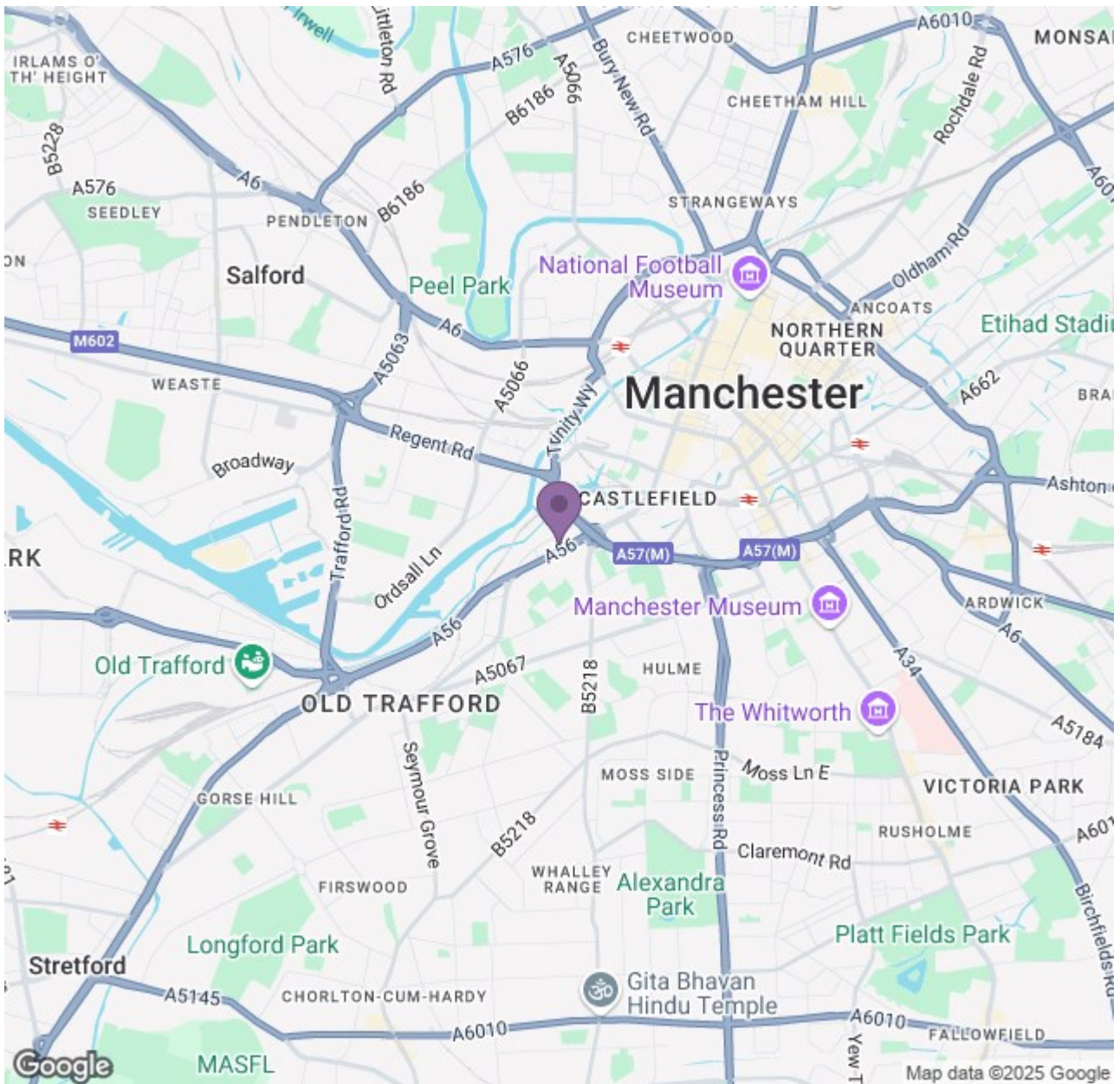
We anticipate a significant amount of interest for this property, so if you are interested please do get in touch with us as soon as possible.

Available 7th August 2025
12 month tenancy.
Deposit £1,550
Council Tax Band D.



Ascend

Built on higher standards



Energy Efficiency Rating		Environmental Impact (CO ₂) Rating	
Band	Score	Band	Score
A	85-92	A	1-3
B	69-84	B	4-6
C	54-68	C	7-9
D	39-53	D	10-12
E	24-38	E	13-15
F	9-23	F	16-18
G	1-8	G	19-21

England & Wales
2020-2021 EPC

Ascend

Built on higher standards